

Pinellas Trail User Count Data Summary

Automated Trail Counter Data Collection Period:
June 1st – 30th (30 days)

June 2021

30-Day Count Total: ***121,892**

Daily Average Users: **3,932**

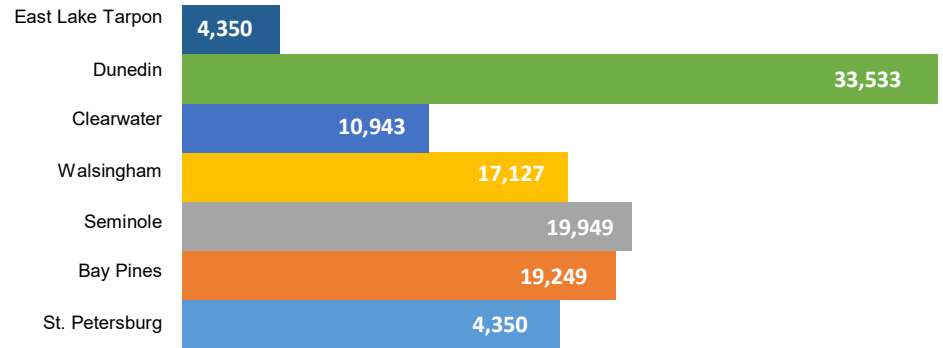
Highest Daily Totals:

#1 – Saturday, June 26th (Dunedin – 1,801)

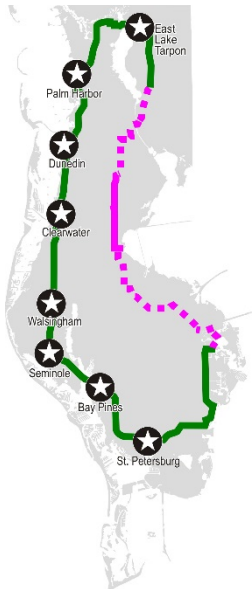
#2 – Saturday, June 5th (Bay Pines – 1,005)

#3 – Saturday, June 12th (Walsingham - 830)

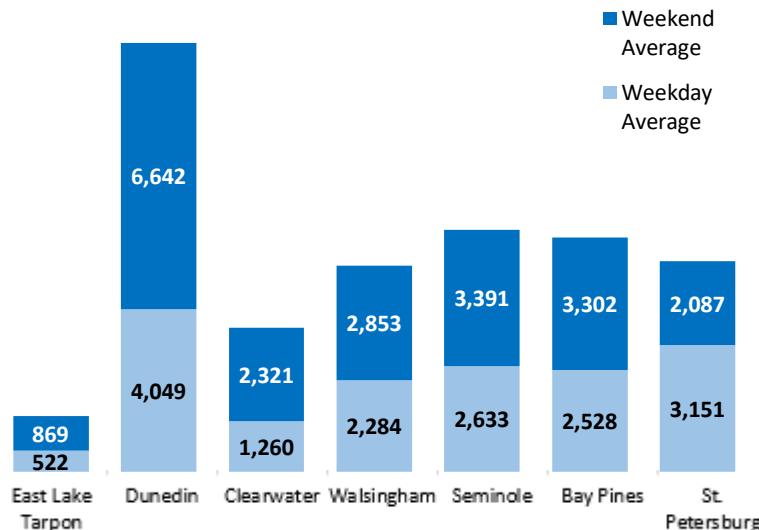
June Monthly Trail Use by Counter Location



Counter Locations



Weekday & Weekend Profile



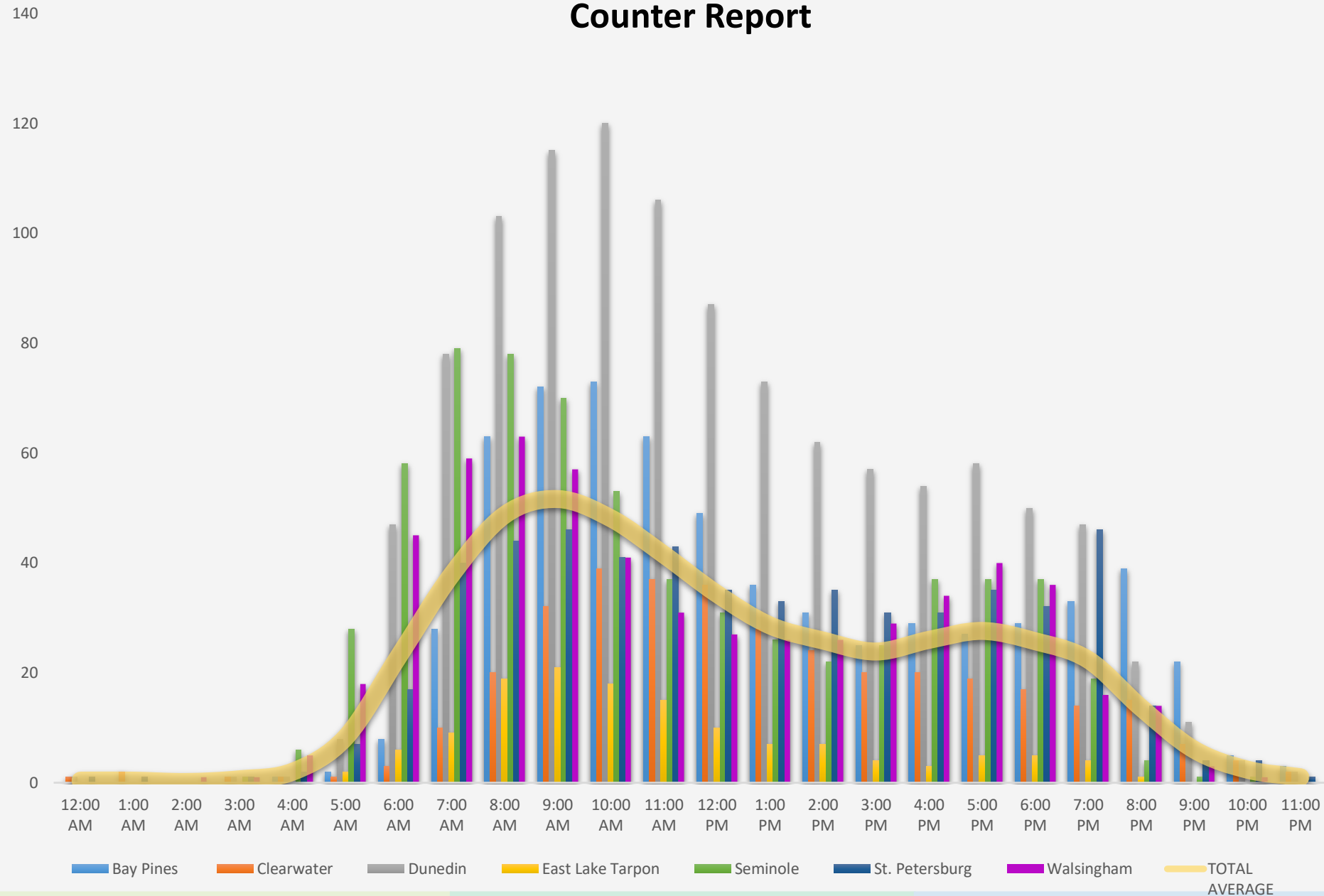
Trail User Mode Split

Counter Location	Walking (Pedestrian Icon)	Bicycling (Bicycle Icon)
East Lake Tarpon:	11%	89%
Dunedin:	18%	82%
Clearwater:	10%	90%
Walsingham:	18%	82%
Seminole:	25%	75%
Bay Pines:	10%	90%
St. Petersburg:	22%	78%

Source: Forward Pinellas *June 2021*
National Weather Service: [June 2020](#)

*Palm Harbor counter technical issues, no data provided.

June 2021 Average Hourly Counter Report



Pinellas Trail User Count Data Summary

Automated Trail Counter Data Collection

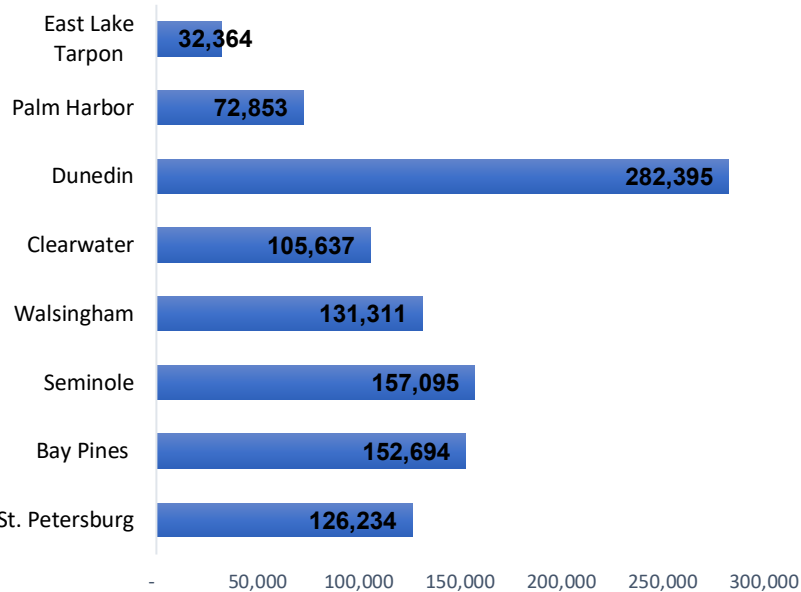
Period: January – June 2021 Data*



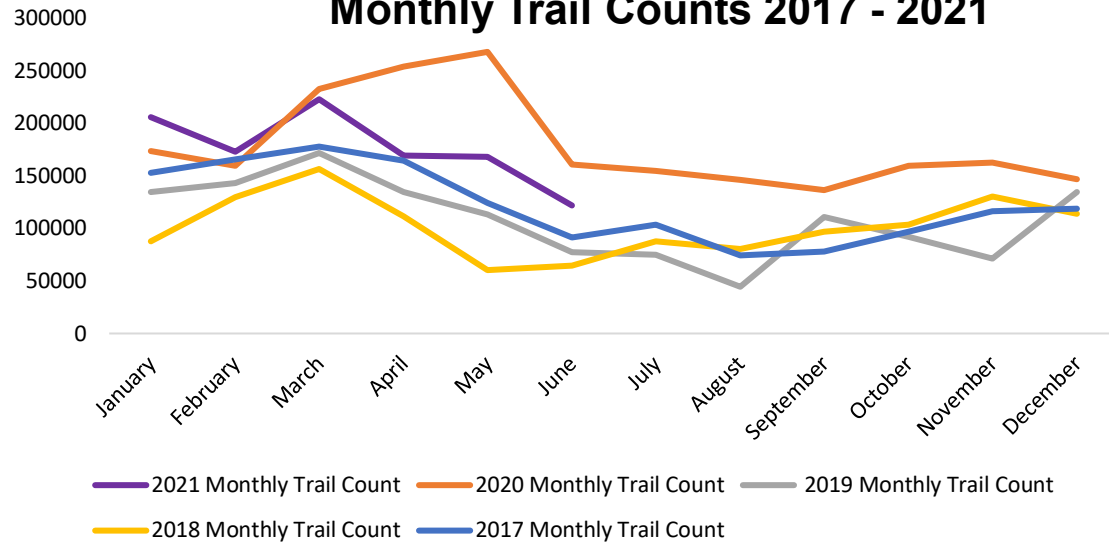
Jan-Jun 2021 Total Count:

1,060,923

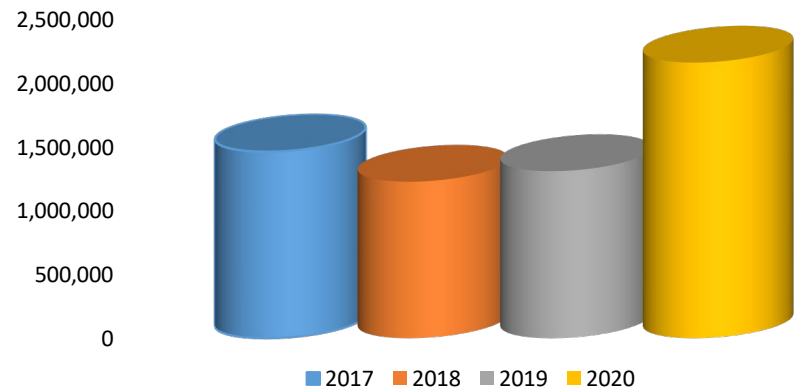
Year to Date Data Per Location



Monthly Trail Counts 2017 - 2021



Pinellas Trail Use 2017 – 2020



* 2010 – 2016 Survey Data & 2017-2021 Counter Data. Technical issues with several counters in 2019 resulting in several missing days of data during 2019.